

WEBSense EMAIL SECURITY



Incoming and outgoing email can expose your organization to viruses, spam, confidential data loss, regulatory violations, or worse. Websense® Email Security protects your organization from these rapidly-evolving threats with an integrated solution that:

- Delivers effective protection from today's blended threats of spam, malware, and phishing by integrating the Websense market-leading Web and reputation data
- Helps ensure regulatory compliance with simplified, out-of-the-box protection layers
- Provides powerful and flexible rules-based policy controls to enforce corporate email policies

Websense Email Security software is powered by Websense ThreatSeeker™ Technology and Global Threat Experts, providing continuous protection against inbound and outbound threats and confidential and compliance protection for any mail server.

Integrated Threat Protection

Websense Email Security threat analysis encompasses multiple layers of intelligence that provide the best protection from today's complex threats; such as, spam, viruses, malware, phishing, harmful URLs, and more. Websense Email Security protects with layers that are all fully automated and deliver continuous protection—while you focus on more strategic initiatives.

- **Antivirus Protection.** Websense Email Security is powered by multiple antivirus technologies to combine zero-hour anti-virus scanning with antivirus engines to give you extensive and interwoven threat protection—all from one vendor.
- **Powerful Antispam Protection.** With proven effectiveness validated by West Coast Labs, Websense Email Security uses Antispam protection that leverages the Websense in-depth research of Web and email borne attacks. This breadth of security research and intelligence uniquely provides Websense Email Security customers with a solution that protects from blended threats at the source.
- **Integrated reputation analysis.** Websense Email Security, which integrates with reputation services in the Websense hosted infrastructure, provides deep connection-level management on incoming email, which greatly reduces server loads and ensures comprehensive zero-hour protection.
- **Easy to install and administer.** Email Security provides automatic database updates, flexible policy setting, and market-leading reporting, which gives you best-in-class protection with exceptional visibility and control.

Outbound Compliance and Data Loss Prevention

Websense Email Security provides powerful and flexible policy controls to help you achieve better corporate governance and compliance. It offers in-depth data inspection combined with 105-plus content and compliance dictionaries pre-packaged in 12 languages.

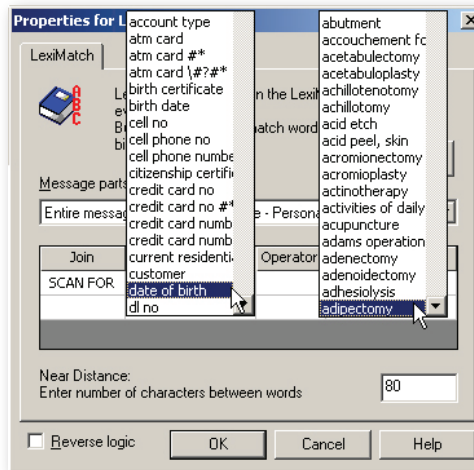
- **Compliance dictionaries and rules.** Out-of-the box HIPAA and GLBA rules make it easy to converge compliance requirements with the same technology you trust to block email threats. Additionally, the Websense configurable dictionaries and lexical analyses allow you to define what is proprietary and prevent sensitive data loss.

- **In-depth data inspection.** Websense Email Security can identify content from hundreds of attachment file types—up to 25 layers deep—regardless of whether that content is embedded or compressed.
- **Simple end-user controls.** Websense Hosted Email Security provides configurable end-user email management for outbound messages, which provides the flexibility for second checks where desired.

Visibility through reporting

- Gain an accurate picture of your organization's email threats and compliance breaches to implement relevant, data-driven policies.
- Information at your fingertips. The intuitive and easy-to-access Web-based interface lets you see the exact source of the email and identifies which policies are triggered.
- Versatile reporting. 40-plus pre-defined, customizable reports plus a Websense Threat Dashboard and Drill-Down Manager show key email indicators. Websense Hosted Email Security reports give you the exact data you need to pin-point and take action on internal and external threats.

- **Secure distribution.** You can delegate and schedule reporting access to any department within your organization—including Compliance and Human Resources. Email Security gives the right kind of visibility to the right individuals.



The Websense out-of-the-box configurable dictionaries allow you to define what is private to prevent sensitive data loss.

Product system requirements

Operating System:

- Windows Server 2000 with SP4
- Windows Advanced Server 2000 with SP4
- Windows Server 2003 Standard Edition SP2
- Windows Server 2003 Enterprise Edition with SP2
- Windows 2003 R2 Enterprise Edition SP2
- Windows XP SP2 (Remote Client only)
- Windows Vista (Remote Client only) requirements—SurfControl Email Filter for SMTP V6.0

Processor:

- Pentium 4 Processor 1.4 GHz or higher

Memory:

- 512 MB RAM minimum;
- 1024 MB RAM recommended

Disk Space:

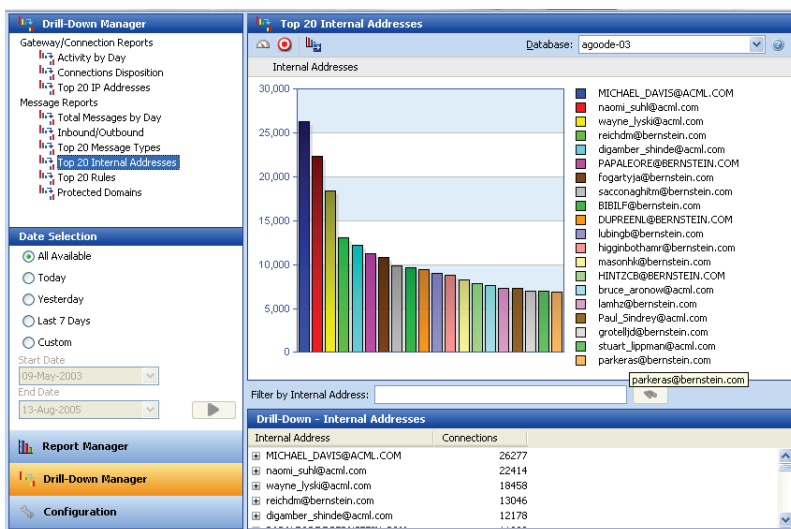
- 1.7 GB minimum;
- 2.2 GB recommended

Summary

Websense Email Security is an easy-to-use and cost-effective solution providing:

- Effective protection from spam, viruses, and blended attacks
- Out-of-the-box support for regulatory compliance
- Powerful and flexible policy controls

Websense ThreatSeeker technology provides proactive protection against email and Web-based threats, stopping attacks before they hit your network. By combining unrivaled security expertise with automated detection technology, ThreatSeeker technology provides the highest levels of accuracy with the lowest levels of false positives.



Websense Email Security reporting tools give you superior visibility over email threats and potential data loss.

Start your FREE trial at websense.com

