



## Network Security

*Check Point network security solutions are the market-leading choice for securing the network infrastructure.*








# UTM-1 Total Security

*All-inclusive, all secured*

UTM-1™ Total Security™ appliances are all-inclusive, turnkey solutions with everything you need to secure your network in a simple, cost-effective way. Each solution includes the proven security features you need along with complete security updates, hardware warranty, and reduced support rates for up to three years. Based on the same Check Point technologies that secure the Fortune 100, UTM-1 appliances deliver uncompromising security with streamlined deployment and administration.

### KEY BENEFITS

- Everything you need to secure your network for up to three years
- Provides peace of mind with proven technologies trusted by the Fortune 100
- Protects networks, systems, and users from multiple types of attacks
- Streamlines security deployment and administration

 <b>Industry-leading firewall</b> •VoIP •Instant Message •P2P	The most proven firewall protection available secures hundreds of applications and protocols including VoIP, instant messaging, and peer-to-peer applications
 <b>VPN (site-to-site, remote access)</b>	Feature-rich, easy-to-configure IPSec VPN features
 <b>Gateway antivirus/ anti-spyware</b>	Signature-based antivirus and anti-spyware protection
 <b>Intrusion prevention</b>	Advanced IPS with both signature- and protocol-anomaly-based detection
 <b>SSL VPN</b>	Fully integrated SSL VPN out-of-the-box
 <b>Web filtering</b>	Best-of-breed Web filtering covers 20 million-plus sites
 <b>Messaging security</b>	Six dimensions of comprehensive protection defend the email infrastructure and eliminate spam and malware

**NGX™**

*The NGX platform delivers a unified security architecture for Check Point.*

## THE SECURITY YOU NEED

### Proven application control and attack protection

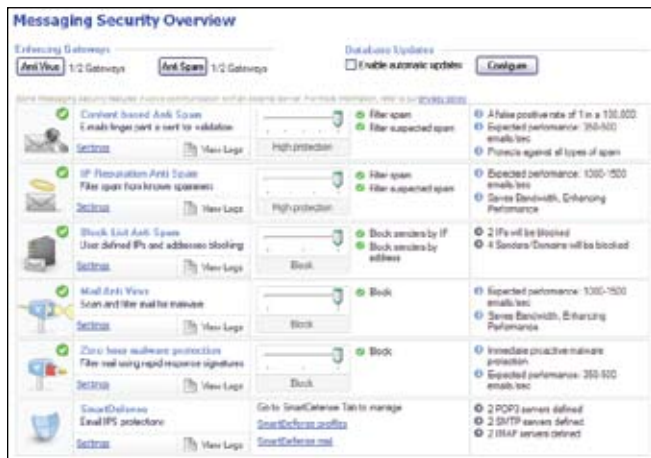
UTM-1 includes the most proven firewall and can examine hundreds of applications, protocols, and services out-of-the-box. Integrated SmartDefense IPS utilizes signature- and protocol-anomaly-based intrusion prevention to protect business-critical services like FTP, HTTP, and VoIP from known and unknown attacks. Similarly, UTM-1 Total Security can block nonbusiness applications like IM and P2P.

### Gateway antivirus, anti-spyware

Gateway antivirus and anti-spyware are core components of UTM-1, complementing desktop endpoint security. UTM-1 Total Security uses an up-to-date list of antivirus and anti-spyware signatures and anomaly-based protection to stop viruses and other malware at the gateway. To check for threats hidden inside legitimate content, real-time antivirus scans are performed on POP3, SMTP, FTP, and HTTP services.

### Messaging security

Uniquely, UTM-1 offers six dimensions of protection against messaging security threats including attacks against the messaging infrastructure, viruses and malware, and advanced forms of spam. Integrated email IPS protects key email server protocols to stop attacks against the messaging infrastructure. To address spam, UTM-1 uses IP-reputation-based blocking and advanced pattern matching to stop advanced threats like image-based spam. In addition to signature-based antivirus, UTM-1 Total Security offers zero-hour protection to stop attacks at their onset, when a signature is not available.



Six dimensions of messaging protection

### Web filtering

UTM-1 Total Security appliances stop inappropriate Web surfing with best-of-breed Web filtering that covers 20-million-plus URLs, so you can define an online acceptable-use policy for your organization.

### Simple site-to-site connectivity

With UTM-1 Total Security appliances, you can simplify the setup of site-to-site VPNs and remote access. Manual setup of node-to-node VPN tunnels and security for an entire VPN is replaced by a one-step process, where new sites and remote users are added automatically.

### Secure, flexible remote access

UTM-1 Total Security appliances can connect employees and business partners to your trusted network through flexible IPSec or SSL-based remote access, working seamlessly with a variety of VPN clients.

## THE SIMPLICITY YOU WANT

### All-inclusive turnkey solution

Everything you need in a UTM network security solution is provided by UTM-1 Total Security appliances—for up to three years. This includes:

- All security protections
- All software and security updates
- Hardware warranty

### Integrated SmartCenter management

Integrated SmartCenter management enables you to centrally manage multiple UTM-1 appliances, as well as other Check Point security solutions, from a single console.

### Centralized, automatic updates

SmartDefense Services enable you to configure UTM-1 into a preemptive security solution, capable of ensuring your networks are safe from new attacks via ongoing and automatic defense updates.

### Quick setup

In less than 10 minutes, UTM-1 Total Security appliances can be set up even by nontechnical staff with the first-time configuration wizard. This truly simple deployment process is as easy as:

- Plugging in and turning on the appliance
- Following the onscreen wizard
- Launching the SmartCenter management interface



The first-time configuration wizard makes configuring UTM-1 Total Security appliances easy.

### System restoration and backup

If your UTM-1 Total Security appliance becomes misconfigured or nonresponsive, a USB hardware token is included to assist system restoration. The token will restore your UTM-1 device to its factory default settings.

## UTM-1 TOTAL SECURITY SPECIFICATIONS

	Protection details
<b>Firewall</b>	
Protocol/application support	200-plus total
VoIP protection	SIP, H.323, MGCP, and SCCP with NAT support
Instant messaging control	MSN, Yahoo, ICQ, and Skype
Peer-to-peer blocking	Kazaa, Gnutella, BitTorrent
Network address translation	Static/hide NAT support with manual and automatic rules
<b>IPSec VPN</b>	
Encryption support	AES 128-256 bit, 3DES 56-168 bit
Authentication methods	Password, RADIUS, TACACS, X.509, SecurID
Certificate authority	Integrated certificate authority (X.509)
VPN communities	Automatically sets up site-to-site connections as objects are created
Topology support	Star and mesh
Route-based VPN	Utilizes virtual tunnel interfaces; numbered/unnumbered interfaces
VPN client support	Complete endpoint security with VPN, desktop firewall
<b>SSL VPN</b>	
SSL-based remote access	Fully integrated SSL VPN gateway provides on-demand SSL-based access
SSL-based endpoint scanning	Scans endpoint for compliance/malware prior to admission to the network
<b>Intrusion prevention</b>	
Network-layer protection	Blocks attacks such as DoS, port scanning, IP/ICMP/TCP-related
Application-layer protection	Blocks attacks such as DNS cache poisoning, FTP bounce, improper commands
Detection methods	Signature-based and protocol anomaly
<b>Antivirus/anti-spyware</b>	
Antivirus protection	Protects HTTP, FTP, POP3, and SMTP protocols
Anti-spyware blocks	Pattern-based spyware blocking at the gateway
Updates	Centralized, daily updates
<b>Web filtering</b>	
URL database	20 million-plus URLs covering 3 billion-plus Web pages
Language support	More than 70 languages spanning 200 countries
Updates	Centralized, daily updates (100,000-plus new sites a week)
<b>Messaging security</b>	
Email IPS	SMTP, POP3, and IMAP attack protection
Pattern-based anti-spam	Detects spam based on dynamic database of signatures
IP reputation checking	Blocks spam and malware by sender
Signature-based antivirus	First layer of protection from viruses and malware
Zero-hour outbreak protection	Complements signature-based protection to block new outbreaks
Block/allow lists	Provides granular control over specific domains and users
<b>Management and reporting</b>	
Centralized management	Includes centralized management
Monitoring/logging	SmartView Tracker™ provides advanced monitoring and logging
Reporting	Express reports
Command line interface	Telnet, SSH
<b>Networking</b>	
DHCP support	SecurePlatform™ DHCP server and relay
ISP redundancy	Protocol-based, source/destination and port route decisions
Routing support	OSPF, BGP, RIP v1/2, Multicast
Layer-2 bridge support	Transparently integrates into existing network
<b>Performance and availability</b>	
High availability	Active/passive and active/active failover options
Load balancing	ClusterXL™ provides near linear scaling
Quality of Service	Floodgate-1™ provides granular QoS control
ISP redundancy	Automatically reroutes traffic to second interface

## UTM-1 TOTAL SECURITY APPLIANCE SPECIFICATIONS

	UTM-1 450	UTM-1 1050	UTM-1 2050
Firewall throughput	400 Mbps	1.2 Gbps	2.4 Gbps
VPN throughput	200 Mbps	220 Mbps	380 Mbps
Concurrent sessions	700,000	800,000	1.2 million
Users supported	Unlimited	Unlimited	Unlimited
VLANs	256	256	256
Storage capacity	80GB	80GB	80GB
Enclosure	1U rack mountable	1U rack mountable	1U rack mountable
Dimensions (standard)	1.71 in. (H) x 16.77 in. (W) x 14.31 in. (D)	1.71 in. (H) x 16.77 in. (W) x 17 in. (D)	1.71 in. (H) x 16.77 in. (W) x 17 in. (D)
Dimensions (metric)	43.5mm (H) x 426mm (W) x 365mm (D)	43.5mm (H) x 426mm (W) x 431.8mm (D)	43.5mm (H) x 426mm (W) x 431.8mm (D)
Weight	2.2 kg (4.85 lbs)	2.3 kg (5 lbs)	2.3 kg (5 lbs)
10/100 interfaces	-	4	4
10/100/1000 interfaces	4	4	4
Operating environment range	Temperature: 5° to 40°C (41° to 104°F); Humidity: 10% to 90% noncondensing Altitude: 3,048m (10,000 ft.)		
Power input	100-240 VAC, 250W	100-240 VAC, 250W	100-240 VAC, 250W
Power consumption	81W	186W	188W
Compliance	UL 60950; FCC Part 15, Subpart B, Class A; EN 55024; EN 55022; VCCI V-3; AS/NZS 3548:1995; CNS 13438 Class A (test passed; country approval pending); KN22, KN61000-4 Series, TTA; IC-950; ROHS		

### CONTACT CHECK POINT

#### Worldwide Headquarters

5 Ha'Soleim Street, Tel Aviv 67897, Israel | Tel: 972-3-753-4555 | Fax: 972-3-575-9256 | Email: info@checkpoint.com

#### U.S. Headquarters

800 Bridge Parkway, Redwood City, CA 94065 | Tel: 800-429-4391; 650-628-2000 | Fax: 650-654-4233 | www.checkpoint.com

©2003–2008 Check Point Software Technologies Ltd. All rights reserved. Check Point, AlertAdvisor, Application Intelligence, Check Point Endpoint Security, Check Point Express, Check Point Express CI, the Check Point logo, ClusterXL, Confidence Indexing, ConnectControl, Connectra, Connectra Accelerator Card, Cooperative Enforcement, Cooperative Security Alliance, CoreXL, CoSa, DefenseNet, Dynamic Shielding Architecture, Eventia, Eventia Analyzer, Eventia Reporter, Eventia Suite, FireWall-1, FireWall-1 GX, FireWall-1 SecureServer, FloodGate-1, Hacker ID, Hybrid Detection Engine, IMsecure, INSPECT, INSPECT XL, Integrity, Integrity Clientless Security, Integrity SecureClient, InterSpect, IPS-1, IQ Engine, MailSafe, NG, NGX, Open Security Extension, OPSEC, OSFirewall, Pointsec, Pointsec Mobile, Pointsec PC, Pointsec Protector, Policy Lifecycle Management, Provider-1, PureAdvantage, PURE Security, the puresecurity logo, Safe@Home, Safe@Office, SecureClient, SecureClient Mobile, SecureKnowledge, SecurePlatform, SecurePlatform Pro, SecuRemote, SecureServer, SecureUpdate, SecureXL, SecureXL Turbocard, Security Management Portal, Sentivist, SiteManager-1, SmartCenter, SmartCenter Express, SmartCenter Power, SmartCenter Pro, SmartCenter UTM, SmartConsole, SmartDashboard, SmartDefense, SmartDefense Advisor, Smarter Security, SmartLSM, SmartMap, SmartPortal, SmartUpdate, SmartView, SmartView Monitor, SmartView Reporter, SmartView Status, SmartViewTracker, SMP, SMP On-Demand, SofaWare, SSL Network Extender, Stateful Clustering, TrueVector, Turbocard, UAM, UserAuthority, User-to-Address Mapping, UTM-1, UTM-1 Edge, UTM-1 Edge Industrial, UTM-1 Total Security, VPN-1, VPN-1 Accelerator Card, VPN-1 Edge, VPN-1 Express, VPN-1 Express CI, VPN-1 Power, VPN-1 Power Multi-core, VPN-1 Power VSX, VPN-1 Pro, VPN-1 SecureClient, VPN-1 SecuRemote, VPN-1 SecureServer, VPN-1 UTM, VPN-1 UTM Edge, VPN-1 VSX, Web Intelligence, ZoneAlarm, ZoneAlarm Anti-Spyware, ZoneAlarm Antivirus, ZoneAlarm ForceField, ZoneAlarm Internet Security Suite, ZoneAlarm Pro, ZoneAlarm Secure Wireless Router, Zone Labs, and the Zone Labs logo are trademarks or registered trademarks of Check Point Software Technologies Ltd. or its affiliates. ZoneAlarm is a Check Point Software Technologies, Inc. Company. All other product names mentioned herein are trademarks or registered trademarks of their respective owners. The products described in this document are protected by U.S. Patent No. 5,606,668, 5,835,726, 5,987,611, 6,496,935, 6,873,988, 6,850,943, and 7,165,076 and may be protected by other U.S. Patents, foreign patents, or pending applications.